



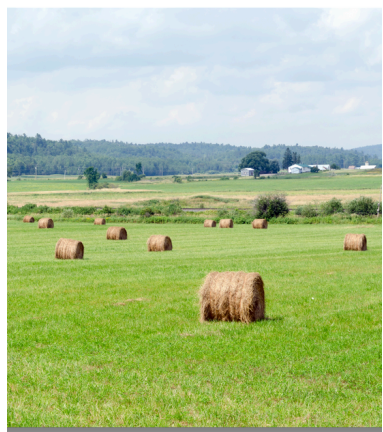
## Elevate Your Farm's Future with *Loss Control*

While some insurers restrict or non-renew agricultural accounts, ARU remains a steady partner for farms and agricultural operations.

Why would we accept the same risks that other companies are afraid of? Because of our advanced loss control process.

At ARU, we work closely with our policyholders to identify and address elevated risk factors before they lead to loss. Through practical, collaborative loss control, we help farms operate safely, efficiently, and sustainably for years to come.

ARU is committed to supporting your operation for the long term, and we are confident these measures will strengthen your farm's productivity and profitability. If you have any questions, please contact your broker for more information.



### LOSS CONTROL BENEFITS



#### EDUCATION:

Knowledge is power. We've invested significant resources into loss prevention data and research. We believe that together we are better able to avoid losses so everyone wins! Vigilance is the best defense against preventable losses.



#### TECHNOLOGY:

LC+ is our proprietary technology designed specifically for the specialized risks involved in poultry farming. Our in-house experts continually develop and improve LC+ to serve the poultry space.



#### CONTINUITY:

We understand that downtime means loss of revenue. Loss Control is the best way to prevent avoidable, mechanical failures and keep your operations up and running for years to come.



#### SAVINGS:

The least expensive loss for all parties involved is one that was avoided! While loss control measures may have associated costs, they are far less than the cost of a total loss or significant claim.



#### AVAILABILITY:

Our advanced loss control process is what enables us to offer competitive premiums for poultry houses and remain a sustainable partner for poultry growers.